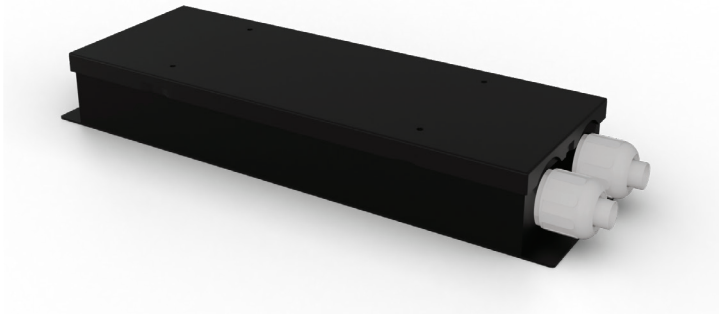


PROJECT:

TYPE:

QUANTITY:



**DESCRIPTION**  
Pro Box is a signal converter module that accepts 0–10V, DMX512, or DALI control signals along with a fixed line-voltage input. It converts these inputs into an electronic low-voltage (ELV) dimmed output, supporting loads up to 2000 W at 277 V and up to 1000 W at 120V.

- Features:
- Universal Input 120V, 230V and 277V 50Hz/60Hz
  - 1000W @120VAC/60Hz,
  - 1800W @230VAC/50Hz,
  - 2000W @277VAC/60Hz
  - 0-10V, DMX512 and DALI to ELV
  - Auto-Sensing Input Voltage and Frequency
  - Power Interface and Data Interface with High Grade Surge Protection

INPUT

Input Voltage Range	120V AC - 277V AC
Input Frequency	47-63Hz
Input Current	8a @ 120V AC/ 60Hz, 8a @ 230V AC/ 50Hz, 8a @ 277V AC/ 60Hz
Input Power	1000W @ 120V AC, 1800W @ 230V AC, 1000W @ 277V A
Standby Consumption	<2W

OUTPUT

Output Voltage Range	120V AC - 277V AC
Output Current to LED Fixture	47-63Hz
Output Power	8a @ 120V AC/ 60Hz, 8a @ 230V AC/ 50Hz, 8a @ 277V AC/ 60Hz
ELV (Trailing Edge/ Reverse Phase)	1000W @ 120V AC, 1800W @ 230V AC, 1000W @ 277V A


DIMMING INTERFACE

0-10V	Output	11V Maximum
	Source Current	Active or Passive Dimmer
	Compatibility	Active or Passive Dimmer
	Over Voltage Protection	Withstand <30V DC Input, Higher Voltage will damage the interface
DMX	Compatibility	Compatible with USITT DMX512-A
	Surge Protect	1KV/ 500a
Dali	TBA	TBA


PROTECTION

Output Voltage Range	120V AC - 277V AC
Output Current to LED Fixture	47-63Hz
Output Power	8a @ 120V AC/ 60Hz, 8a @ 230V AC/ 50Hz, 8a @ 277V AC/ 60Hz
ELV (Trailing Edge/ Reverse Phase)	1000W @ 120V AC, 1800W @ 230V AC, 1000W @ 277V A

STANDARDS & CERTIFICATIONS



Tested to UL & CSA by Intertek For Use in USA & CANADA.



Product specifications and features are subject to change without notice. For the most up to date information, please visit our website. © 2025 Pariah Lighting. All rights reserved.

PROJECT:	TYPE:	QUANTITY:
----------	-------	-----------

CONDITION

IP Class	IP67
Operating Temperature	-30°C ~ + 50°C
Storage Temperature, Humidity	-30°C ~ 70°C, 20-70% RH

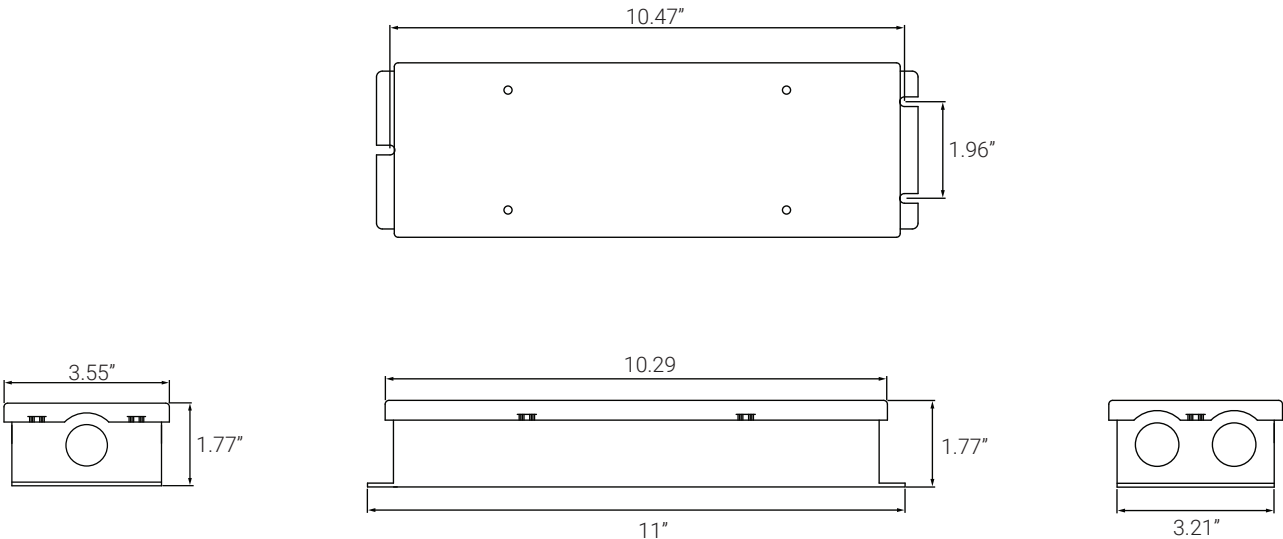
SAFETY

Safety Standard	UL8750
Isolation Voltage	3.75KV AC Between the data interface and power input/ output
Isolation Resistance	100m Ohms/ 500V DC

OTHER

Life	≥50000H @ Ta=25°C, ≥30000H @ TA=65°C
------	--------------------------------------

DIMENIONS



ORDER CODE

MODEL	DIMMING
PB	
PRO BOX	PB 0-10V/ ELV 010VELV
	0-10V/ 0-10V 010V010V
	DMX/ ELV DMXELV